



Second Floor

Europa Hall / Paracelsus Hall

Room	Height°*	Length x Width°	m²	Theater**	Class-room**	Banquet round
Europa Hall incl. balcony and side gallery	2.45 – 11.00	27.00 x 27.00	1,100	1,324	620	500 round + 290 angular
Europa Hall excl. balcony and side gallery	2.45 – 11.00	27.00 x 27.00	729	934	620	500 round or 540 angular
Paracelsus Hall	2.63	9.50 x 9.85	94	72	60	50

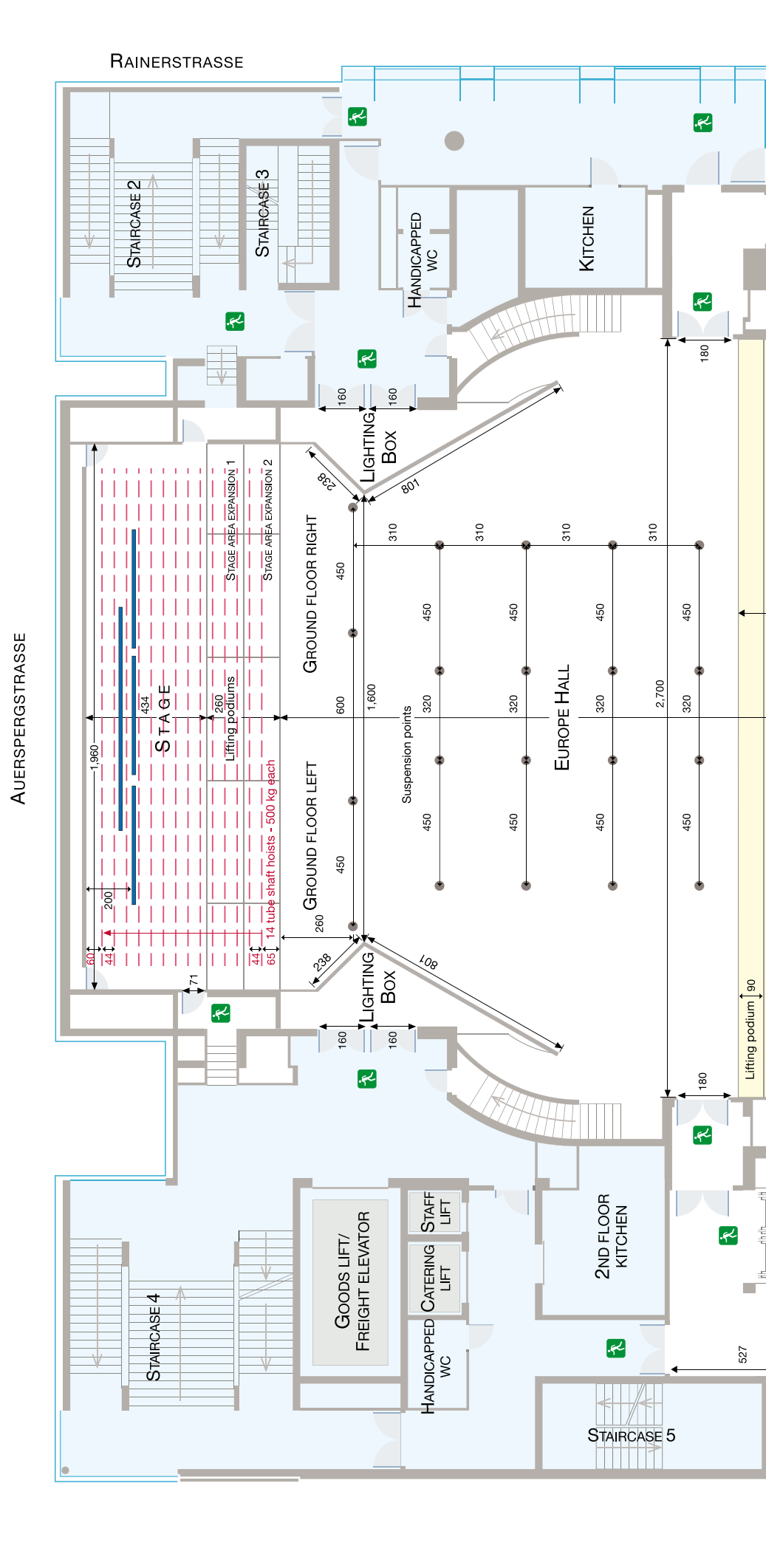
Stage size

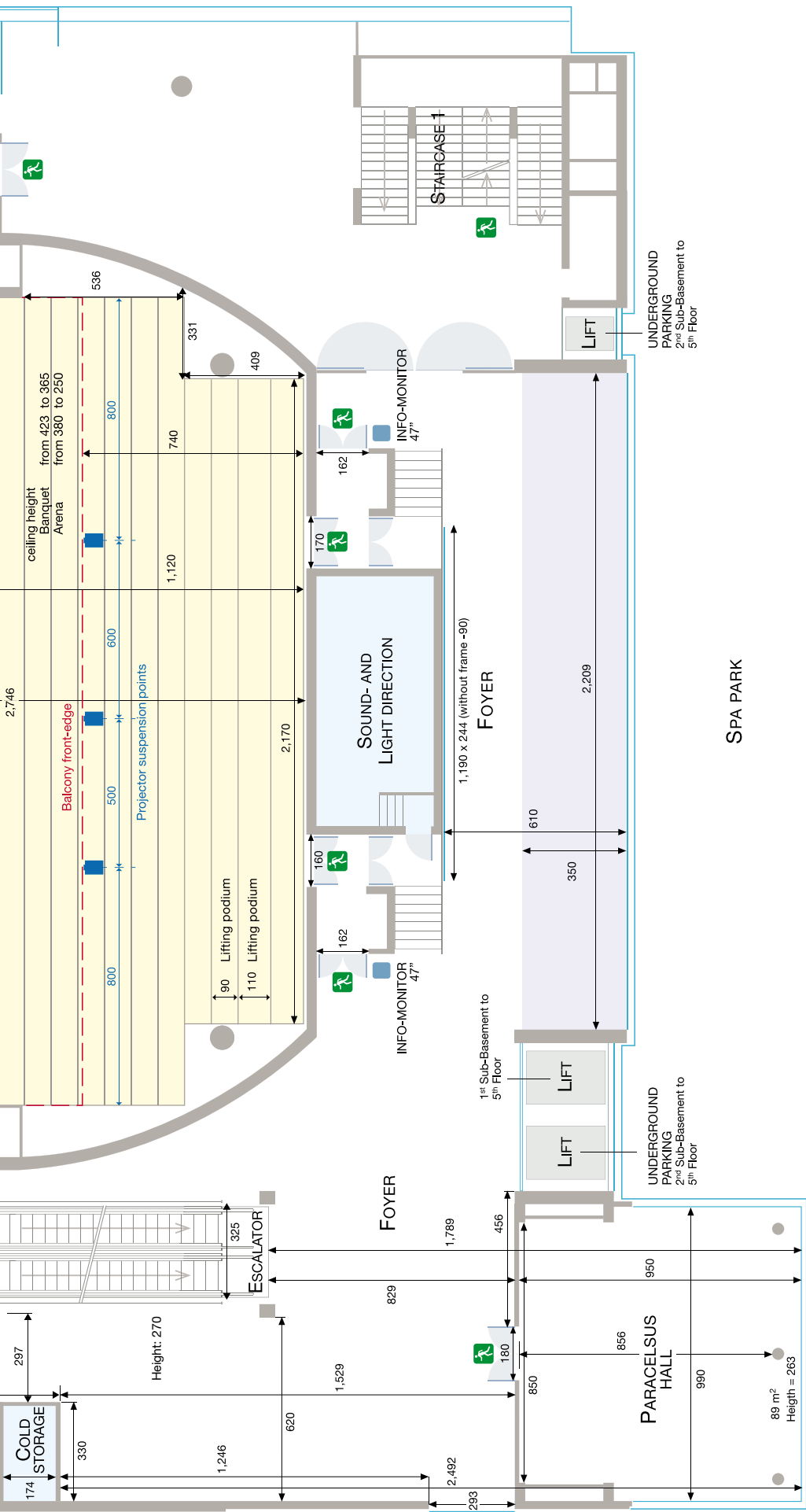
Fixed stage (not mobile)	19.60 x 4.60 m
Extended stage 1	19.60 x 5.90 m
Extended stage 2	19.60 x 7.20 m
Height of stage	1.00 m
Height of portal	6.00 m
Width of stage	max. 19.40 – min. 13.80 m

Stage engineering

Power supply	2 x 125 ampere CEE 2 x 63 ampere CEE 4 x 32 ampere CEE 4 x 16 ampere CEE 3 x 230 volt
All connections are located in the center of the rear stage wall.	
Light circuits	24 circuits of 2.5 kW
DMX	4 DMX in 4 DMX out
Intercom	4 Intercom
Video	24 BNC
Audio	24 XLR
DMX, intercom, video and microphone cables converge in the light and sound controls at the back of the room. XLR connections to record audio signals are located near the stage or directly in the light and sound controls at the back of the room.	

Second Floor / Europa Hall





CAPTION

240 Length specifications in centimetres

- Mobile walls
- Fixed walls
- Tube shaft hoist
- Lifting podium
- Closed area



Status: 2017/08

Second Floor / Europa Hall / Electrical Plan

