



First Floor

Exhibition Foyer

Room	Height ^{°*}	Length x Width [°]	m ²	Exhibition	Reception	Banquet round
Exhibition foyer	3.40	27.70 x 28.30	715 <small>without escalator</small>	300 m ² nt	650	300
Exhibition foyer + Karajan Hall	3.40	–	1,002	510 m ² nt	1.000	450
Exhibition foyer + Wolf-Dietrich Hall	3.40	–	881	400 m ² nt	900	400
Exhibition foyer + Karajan Hall + Wolf-Dietrich Hall	3.40	–	1,168	600 m ² nt	1.200	580

Cafe

	Height ^{°*}	Length x Width [°]	m ²	Exhibition	Reception	Banquet round
Cafe upper level	2.56	12.10 x 5.80	70	–	100	40
Cafe lower level	2.40 – 5.59	5.50 x 9.90	55	–	50	40

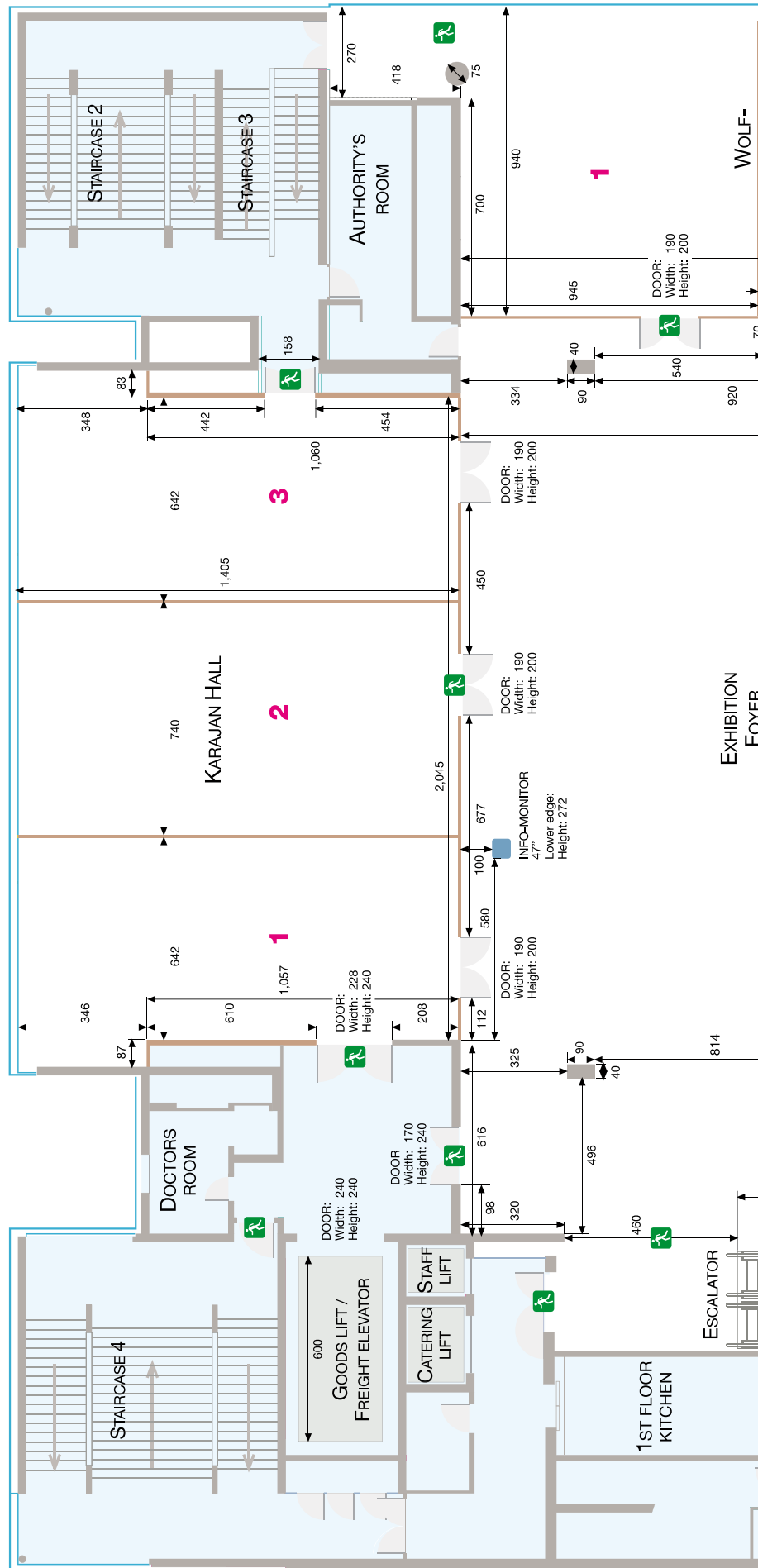
[°] = Size in meters.

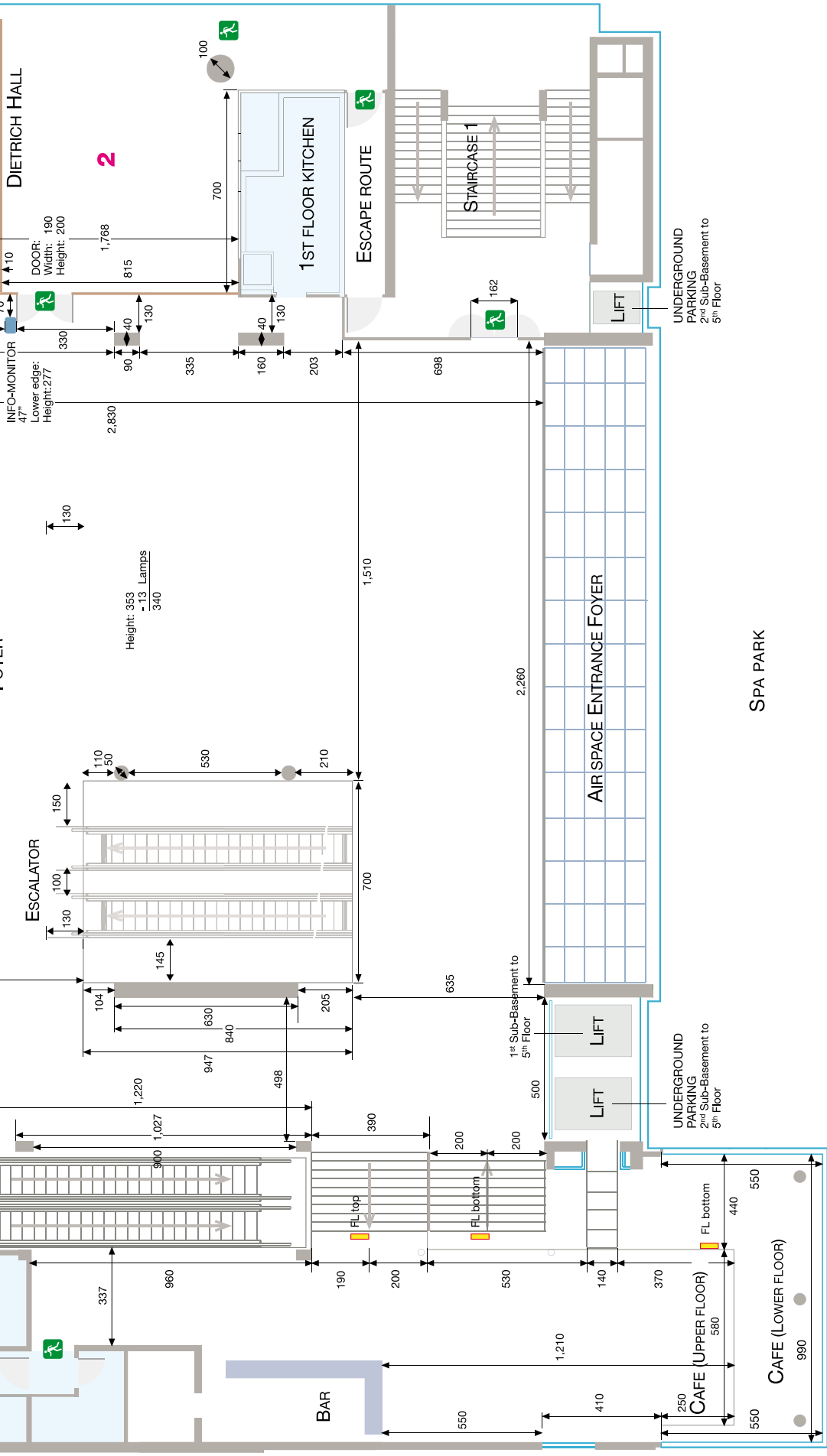
* = Taking the hanging lights (13 cm) into account.

First Floor

AUERSPERGSTRASSE

RAINERSTRASSE





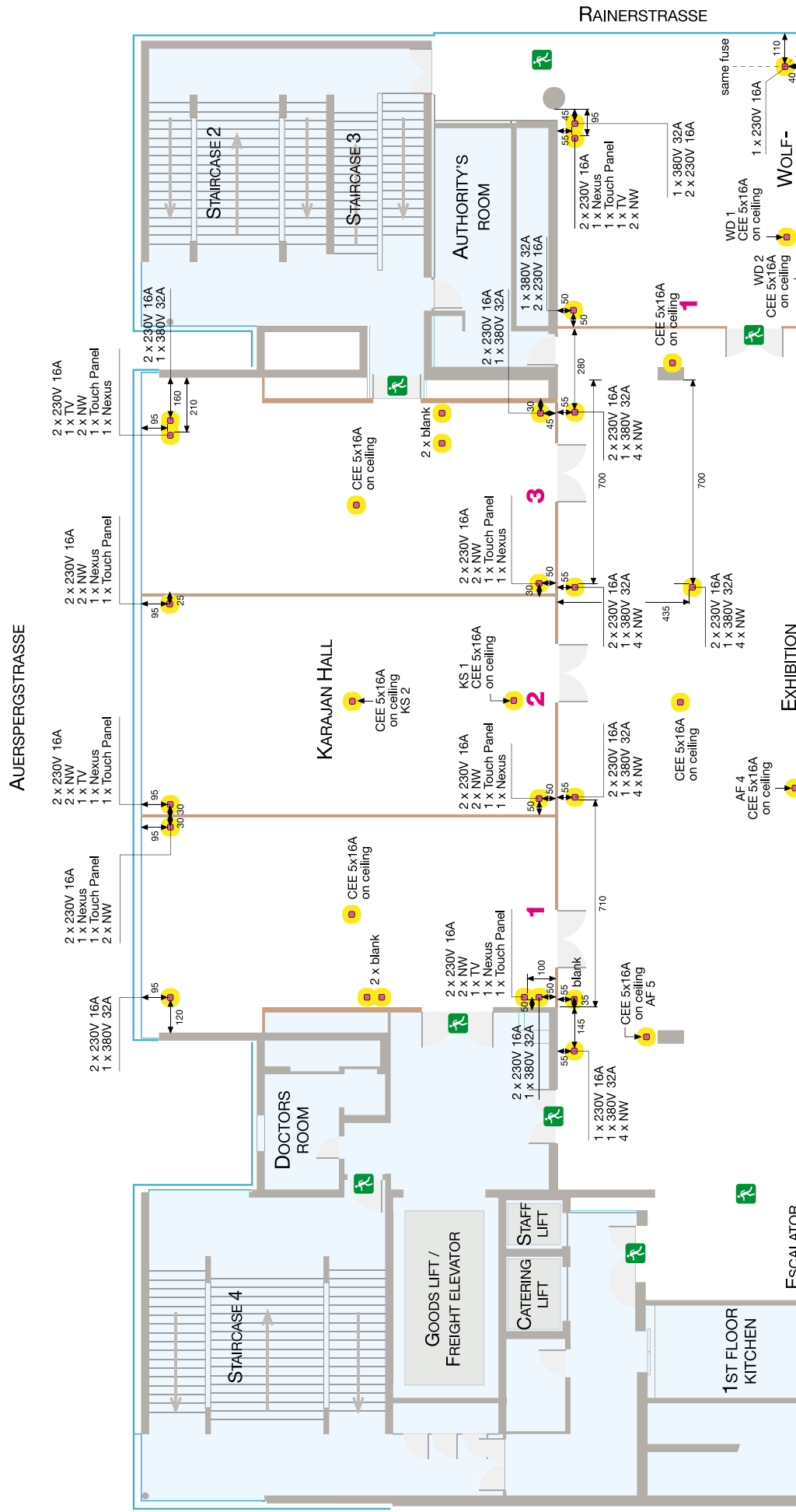
CAPTION

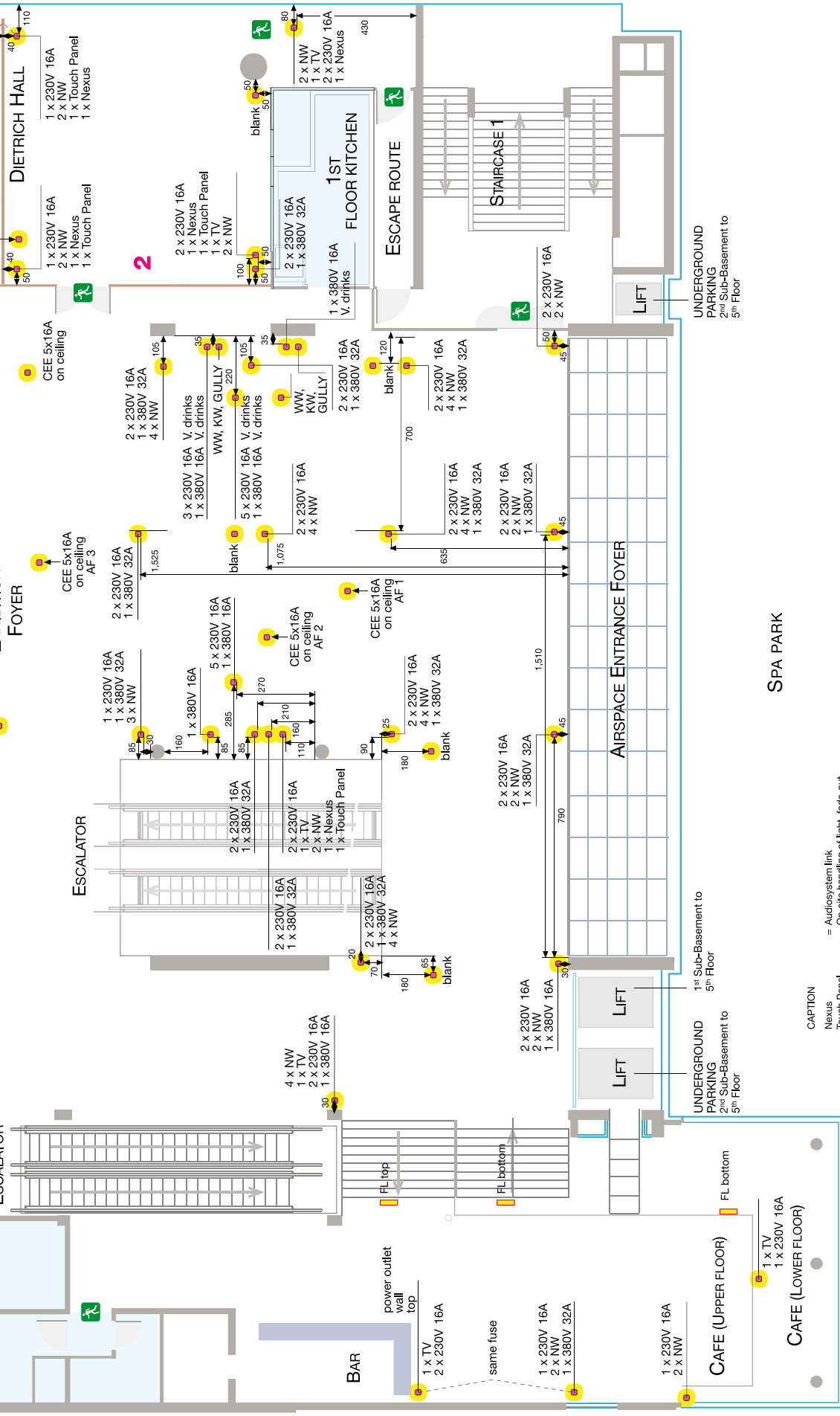
- 240 Length specifications in centimetres
- Mobile walls
- Fixed walls
- Closed area
- FL Escape route lighting



Status: 2017/08

First Floor / Electrical Plan





- CAPTION**
- Nexus
 - Touch Panel
 - NW
 - IR
 - Red flash light BMZ
 - TV-Antenna
 - Bottom tank
 - 85
 - Length specifications in centimetres
 - Floor outlet
 - Mobile walls
 - Fixed walls
 - Closed area
 - FL Escape route lighting
- = Audiosystem link
 = On-site handling of light, fade-out shading, silver screens (if present)
 = Network analog, ISDN, V-Lan, dedicated line
 = Cabinet for infrared heating element
 = Fire detector flash light
 = TV and Radio Link
 = WW and CW supply and drain



Status: 2017/08